



**marinaflexx**  
Broaden your flooring horizons!

Your waterproof hardwood floor in boat deck optic



**natural. waterproof. jointless.**

**[www.marinaflexx.at](http://www.marinaflexx.at)**

Your flexible hardwood floor in boat deck look

**Material**

Sonnberg parquet - hardwood from sustainable forests, 100% made in Austria

**Surface**

Surface protected with high quality oils - without losing the haptic feeling of the wooden surface

**Installation**

Pre-oiled parquet - ready to install and immediately usable after installation, waterproof glueing and full-surface bonding with the substrate

**Maintenance**

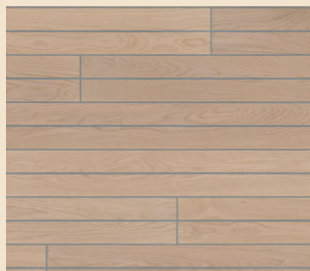
marinaflexx is simple and easy to clean and maintain - use the oil-care-sets from Sonnberg parquet - order now at [marinaflexx.at](http://marinaflexx.at)

**COLOR RANGE**

**NATURE**



**SNOW**



**GREY**



**MAROON**



Your individual hardwood floor in boat deck look



**YOUR HOLIDAY VIBES AT HOME**

With marinaflexx you will enjoy your daily dose of holidays at home. Bring the unique boat look into your living area and experience the maritime vibes that go along with this hardwood floor.

The waterproof wooden floor for indoor use will convince you with its look and its usability. It combines the warmth of a real wood floor with the black flexx-joint that creates the special look.

Enjoy this wooden floor now in spas, bathrooms and toilets, foyers or living areas without the worry of spills! The floor is capable to cope with high load use, is easy to clean and convinces with its design.

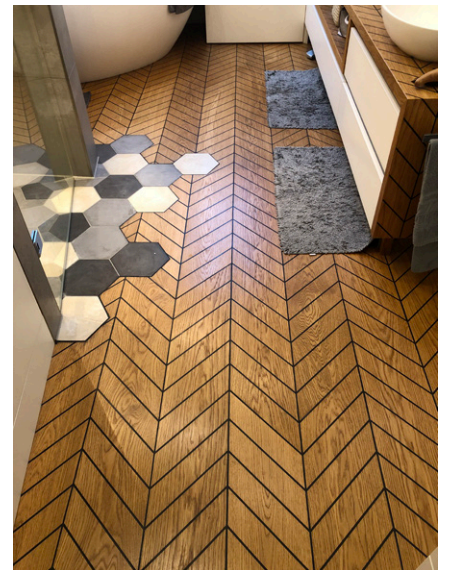
Walk on it barefoot and the haptic of this surface will convince you and your feet to love this floor from the very first step!

Create your feel-good zone with marinaflexx.

**A WIDE RANGE OF APPLICATIONS**

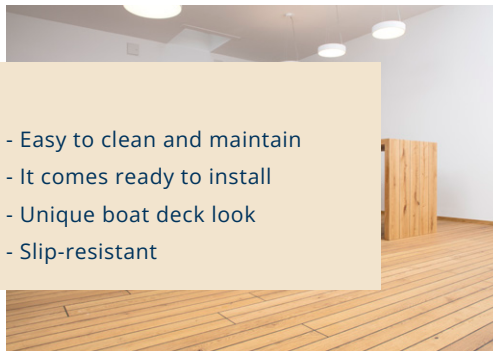
marinaflexx was developed to give hardwood floor the opportunity to be installed in any room, especially in indoor wet areas and humid rooms. The pre-oiled surface is slip-resistant and the waterproof rubber joints make this wood flooring perfectly resistant to moisture.

With its unique look and high accuracy of fit it's perfect for the use in living areas, wellness areas, hotels, restaurants, office rooms or your boat deck.



**YOUR BENEFITS**

- Waterproof wood flooring comes true
- Successfully used on boat decks
- Suitable for underfloor heating
- Ideal for humid and wet areas
- Easy to clean and maintain
- It comes ready to install
- Unique boat deck look
- Slip-resistant



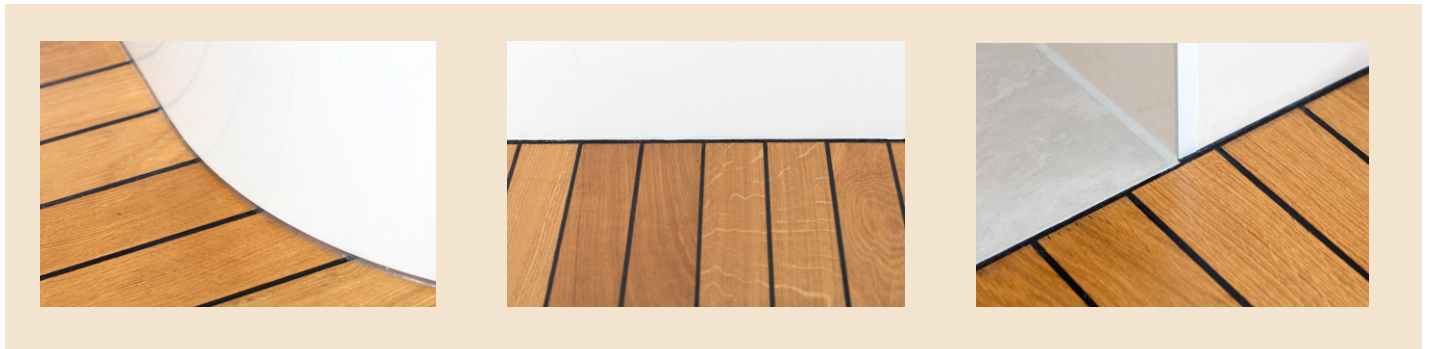
Your marinaflexx floor is long lasting and resistant. It withstands a high load of use and comes with a product guarantee of up to 10 years. Its surface makes it extremely easy to clean and maintain, so it's perfect for areas with high cleaning requirements.

To get some hints and tips for cleaning and maintaining your wooden floor visit [www.marinaflexx.at](http://www.marinaflexx.at)!

## WOOD FLOORING SYSTEM FOR HIGHEST DEMANDS

Craftsmanship with many years of experience and intense research on wood flooring made it possible to develop a waterproof hardwood floor that offers a wide range of applications. The pre-oiled planks and the flexx-joint give this floor a unique boat deck look.

marinaflexx comes ready to install. Due to its renovability the floor has a long life span. The robust marinaflexx multilayer prefinished parquet elements consist of an approx. 3.5 mm thick wear layer. The approx. 10 mm thick elements are provided all around with a tongue and groove, as well as with a permanently elastic flexx-joint and offer optimal protection against the penetration of moisture and humidity.



### THE FLEXX-JOINT

This elastic joint technology is used on most ship decks all over the world and has proven itself for many years. This gives marinaflexx the certainty that no water penetrates the joint and keeps the natural joint-free optic over a lifetime.

The black joint creates a flexible, universally applicable wooden floor. The expansion joint allows 5-fold expansion and counter-expansion and thus absorbs the swelling and shrinkage of the parquet plank, prevents the formation of joints and guarantees to remain sealed.

The permanent elasticity is given in the temperature range from -40° to +100°C.

Your contact:



For further information visit:  
[www.marinaflexx.at](http://www.marinaflexx.at)